

Idaho Department of Health and Welfare

Crisis Standards of Care

Introduction and Definition

Crisis standards of care (CSC) are defined as “a substantial change in the usual health care operations and the level of care it is possible to deliver, which is made necessary by a pervasive (e.g., pandemic influenza) or catastrophic (e.g., earthquake, hurricane) disaster. The change in the level of care delivered is justified by specific circumstances and is formally declared by a state government, in recognition that crisis operations will be in effect for a sustained period.”

Source: Institute of Medicine (IOM). 2012. Crisis Standards of Care: A Systems Framework for Catastrophic Disaster Response

Crisis standards of care shifts the focus of healthcare delivery from the needs of individuals to the needs of the community. The goal is to save the most lives possible when healthcare resources are insufficient to meet demand. Crisis standards of care clinical guidance documents provide strategies for allocating healthcare resources in specific scarce resource situations.

Background

The Idaho Department of Health and Welfare (DHW) developed the Idaho Crisis Standards of Care Plan (Plan) to provide for the development and implementation of crisis standards of care. The Plan was directed by DHW with input from multiple entities comprised of legal, emergency management, emergency medical services, healthcare, and public health representatives from throughout the state. The Plan provides a framework that supports healthcare delivery in Idaho during disasters, such as the current coronavirus 2019 (COVID-19) pandemic, in which the healthcare system may be overwhelmed by patient surge and/or resource shortages. The State of Idaho Disaster Medical Advisory Committee (SIDMAC) developed a companion document to the Plan. This document, *Patient Care: Strategies for Scarce Resource Situations*, is intended to provide guidance for healthcare organizations when CSC has been implemented.

Process for Addressing Healthcare Resource Limitations

Hospitals and healthcare entities with resource limitations that, if not mitigated, will impact their ability to deliver the usual standard of care will reach out to various entities (such as the Idaho Hospital Association, local public health districts, Idaho Department of Health and Welfare (DHW), etc.) for assistance. Generally, parties seeking resources will be directed to their local public health district that will work with the hospitals and healthcare entities to fulfill resource requests. If unmet needs persist, the public health district will forward the request to state-level Unified Command, comprised of the DHW Preparedness Program in the Division of

Public Health and Idaho Office of Emergency Management (IOEM), to determine if resource needs can be met through coordination and/or redistribution of resources within the state, from another state, or from federal resources.

If resource needs require acceleration, an expedited process has been developed to resolve time-sensitive resource needs from healthcare entities when all local and regional resources have been exhausted. The DHW State Communications Center will convene a COVID-19 Healthcare Surge call with relevant parties who may be able to help address urgent resource limitations (i.e., beds, staff, supplies, medications, equipment, etc.) through coordination of statewide resources, other states or the federal government. This COVID-19 Healthcare Surge Call will be utilized to ensure state and local public health and emergency management can swiftly determine the best course of action to provide the needed resource(s) as quickly as possible.

Process for Activating Crisis Standards of Care

If the process described above is unsuccessful in mitigating resource limitations, crisis standards of care may need to be activated. The Director of DHW will convene the Crisis Standards of Care Activation Advisory Committee to review all the measures that have been taken to address the resource limitation. If it is determined that no further options exist, and the resource limitation will impact the ability of healthcare systems to deliver the usual standard of care, the Committee may recommend to the Director that crisis standards of care be activated. The Director will then decide whether to activate crisis standards of care under the authority vested in him through this temporary rule.

Temporary Rule

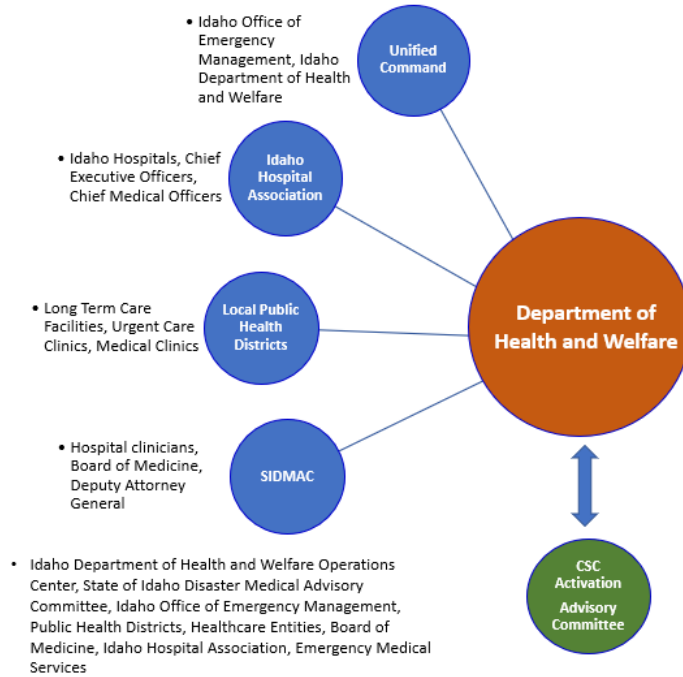
IDAPA 16 - DEPARTMENT OF HEALTH AND WELFARE

16.02.09 - CRISIS STANDARDS OF CARE FOR HEALTHCARE ENTITIES

DOCKET NO. 16-0209-2101

Crisis Standards of Care Process Flow

Crisis Standards of Care: Information Flow for Activation



The Idaho Department of Health and Welfare (DHW) will receive information from entities for situational awareness related to scarce resources in an emergency. This information will be reviewed by DHW to determine when resources are critically limited or unavailable. DHW will convene the CSC Activation Advisory Committee to determine if a recommendation should be made to activate CSC. If the Activation Advisory Committee determines that activation is appropriate, they will make that recommendation to DHW Director Jeppesen who will activate the temporary emergency rule for CSC. This allows hospitals and healthcare systems to implement crisis standards of care as warranted.